

Luminaire Photograph



Light Output Ratio:	100.0%	
Luminaire Power:	15.95 W	
SHR Nominal:	1.75	Calculated using the TM5
SHR Maximum:	0.00	fine grid method.

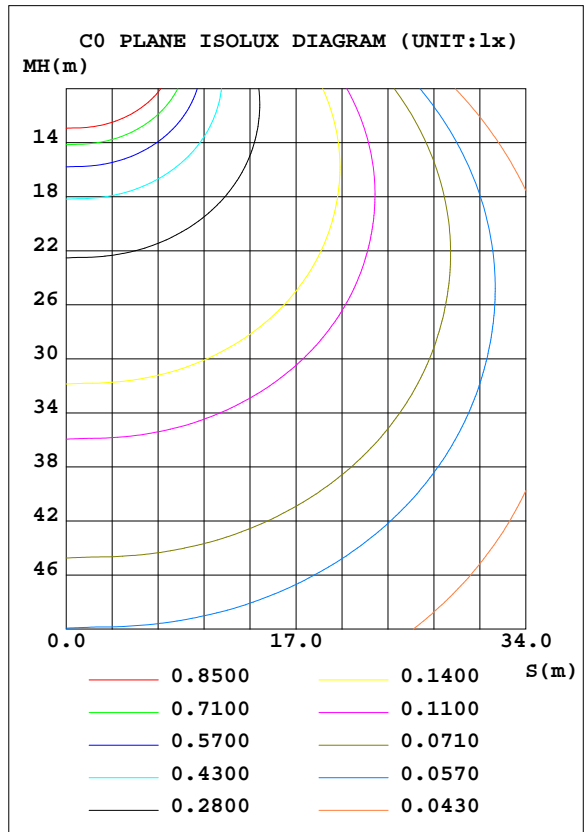
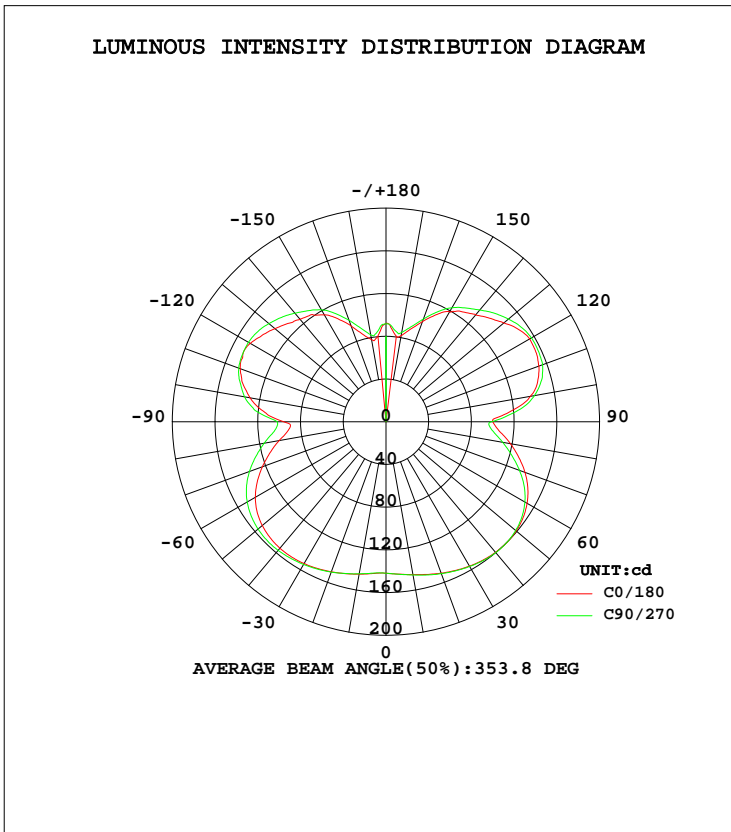
C Range: 0 - 360DEG
C Interval: 30.0DEG
Test Speed: MEDIUM
Temperature:34DEG
Operators:Jason
Test Date:2015-09-01

γ Range: 0 - 180DEG
 γ Interval: 0.5DEG
Test System:EVERFINE GO-2000A_V1 SYSTEM V1.0.256
Humidity:65.0%
Test Distance:18.630m [K=1.0000]
Remarks:

LUMINAIRE PHOTOMETRIC TEST REPORT

Test:U:220.9V I:0.0742A P:15.95W PF:0.9730 Lamp Flux:1698.4x1 lm		
NAME: LED jade light	TYPE:JD-18W-360N-FH-02(4000LM300K)	
DIMENSION:	SPECIFICATION:18W	SERIAL No.:CZ150901
MANUFACTURER: Sheenly Lighting Co., Ltd	SURFACE:	PROTECTION ANGLE:

DATA OF LAMP		PHOTOMETRIC DATA Eff: 106.50 lm/W			
MODEL	LED	I _{max} (cd)	160.7	S/MH(C0/180)	1.65
NOMINAL POWER(W)	16	LOR(%)	100.0	S/MH(C90/270)	1.68
RATED VOLTAGE(V)	220	TOTAL FLUX(lm)	1698.4	η UP, DN(C0-180)	24.1,25.3
NOMINAL FLUX(lm)	1698.4	CIE CLASS	DIFFUSE	η UP, DN(C180-360)	25.0,25.6
LAMPS INSIDE	1	η up(%)	49.1	CIBSE SHR NOM	1.75
TEST VOLTAGE(V)	221.0	η down(%)	50.9	CIBSE SHR MAX	0.00



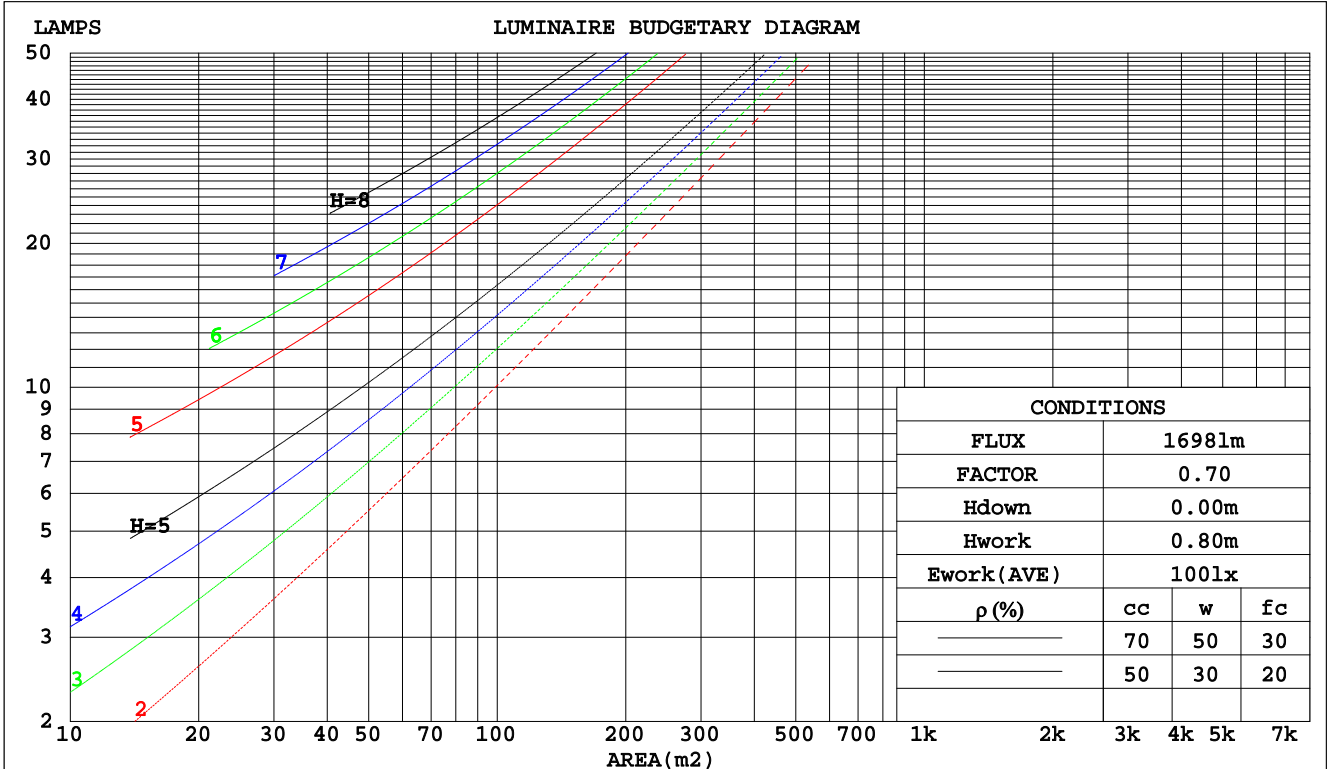
C Range: 0 - 360DEG
 C Interval: 30.0DEG
 Test Speed: MEDIUM
 Temperature:34DEG
 Operators:Jason
 Test Date:2015-09-01

γ Range: 0 - 180DEG
 γ Interval: 0.5DEG
 Test System:EVERFINE GO-2000A_V1 SYSTEM V1.0.256
 Humidity:65.0%
 Test Distance:18.630m [K=1.0000]
 Remarks:

CU AND LUMINAIRE BUDGETARY ESTIMATE DIAGRAM

Test:U:220.9V I:0.0742A P:15.95W PF:0.9730 Lamp Flux:1698.4x1 lm		
NAME: LED jade light	TYPE:JD-18W-360N-FH-02(4000K)	
DIMENSION:	SPECIFICATION:18W	SERIAL No.:CZ150901
MANUFACTURER: Sheenly Lighting Co., Ltd	SURFACE:	PROTECTION ANGLE:

pcc	80%			70%			50%			30%			10%			0
pw	50%	30%	10%	50%	30%	10%	50%	30%	10%	50%	30%	10%	50%	30%	10%	0
pfc	20%			20%			20%			20%			20%			0
RCR	RCR:Room Cavity Ratio						Coefficients of Utilization(CU)									
0.0	1.07	1.07	1.07	.99	.99	.99	.84	.84	.84	.70	.70	.70	.57	.57	.57	.51
1.0	.89	.84	.79	.82	.77	.73	.69	.65	.62	.56	.54	.51	.45	.43	.42	.36
2.0	.76	.68	.62	.70	.63	.57	.58	.53	.49	.48	.44	.40	.38	.35	.32	.28
3.0	.65	.57	.50	.60	.52	.46	.50	.44	.39	.41	.36	.33	.32	.29	.26	.22
4.0	.57	.48	.41	.52	.44	.38	.44	.37	.32	.36	.31	.27	.28	.24	.21	.18
5.0	.50	.41	.35	.46	.38	.32	.39	.32	.27	.32	.27	.23	.25	.21	.18	.15
6.0	.45	.36	.29	.41	.33	.27	.35	.28	.23	.28	.23	.19	.22	.18	.15	.12
7.0	.40	.31	.25	.37	.29	.24	.31	.25	.20	.25	.20	.17	.20	.16	.13	.11
8.0	.36	.28	.22	.33	.26	.21	.28	.22	.18	.23	.18	.15	.18	.15	.12	.09
9.0	.33	.25	.19	.30	.23	.18	.26	.20	.16	.21	.16	.13	.17	.13	.10	.08
10.0	.30	.22	.17	.28	.21	.16	.24	.18	.14	.19	.15	.12	.16	.12	.09	.07



C Range: 0 - 360DEG
 C Interval: 30.0DEG
 Test Speed: MEDIUM
 Temperature: 34DEG
 Operators: Jason
 Test Date: 2015-09-01

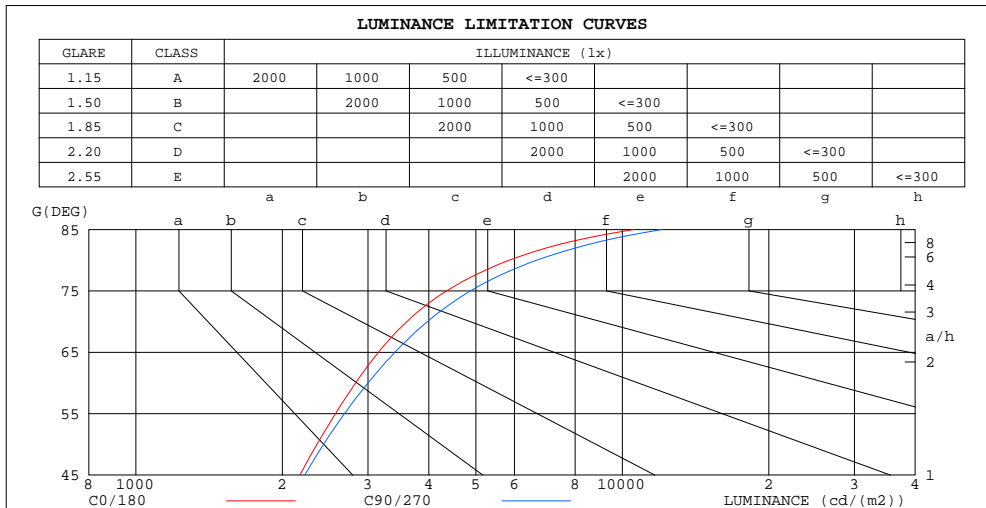
γ Range: 0 - 180DEG
 γ Interval: 0.5DEG
 Test System: EVERFINE GO-2000A_V1 SYSTEM V1.0.256
 Humidity: 65.0%
 Test Distance: 18.630m [K=1.0000]
 Remarks:

ZONAL FLUX DIAGRAM
AND LUMINANCE LIMITATION CURVES

ZONAL FLUX DIAGRAM:

γ	C0	C45	C90	C135	C180	C225	C270	C315	γ	Φ zone	Φ total	%
5	142.7	142.7	142.3	143.0	143.3	143.4	143.4	143.1	0- 5	3.405	3.405	0.20
10	144.9	144.7	144.5	145.4	145.4	145.6	145.7	145.0	5- 10	10.32	13.72	0.81
15	147.3	146.8	147.1	148.1	148.1	148.3	148.5	147.4	10- 15	17.38	31.10	1.83
20	149.5	149.2	149.8	150.9	151.0	151.1	151.4	150.0	15- 20	24.58	55.68	3.28
25	151.7	151.3	152.1	153.5	153.7	153.9	154.1	152.4	20- 25	31.81	87.49	5.15
30	153.3	153.0	154.3	155.9	156.2	156.5	156.5	154.6	25- 30	38.97	126.5	7.45
35	154.4	154.3	156.0	157.8	158.2	158.6	158.7	156.0	30- 35	45.93	172.4	10.15
40	154.6	154.9	157.3	159.3	159.6	160.0	159.9	156.4	35- 40	52.49	224.9	13.24
45	153.5	154.1	157.4	159.9	160.0	160.4	159.9	155.6	40- 45	58.42	283.3	16.68
50	151.2	152.2	156.3	159.1	159.1	159.6	158.5	153.4	45- 50	63.43	346.7	20.42
55	147.3	148.9	154.0	157.0	156.7	157.3	155.3	149.5	50- 55	67.32	414.1	24.38
60	141.2	143.8	150.1	153.1	152.5	152.9	150.2	143.4	55- 60	69.78	483.8	28.49
65	133.1	136.5	144.1	147.2	146.5	146.5	142.8	134.9	60- 65	70.50	554.3	32.64
70	123.1	127.2	136.0	139.2	138.5	137.9	133.0	124.5	65- 70	69.37	623.7	36.72
75	112.4	116.7	126.2	129.3	128.7	127.9	122.0	113.7	70- 75	66.52	690.2	40.64
80	101.5	105.7	115.8	118.5	118.4	117.3	111.0	103.7	75- 80	62.48	752.7	44.32
85	91.86	94.89	105.2	107.3	107.0	106.0	100.5	94.79	80- 85	57.57	810.3	47.71
90	95.85	95.20	101.9	102.5	100.1	99.45	98.70	99.07	85- 90	53.85	864.1	50.88
95	115.5	115.2	123.1	121.1	117.8	122.3	124.4	122.6	90- 95	59.79	923.9	54.40
100	129.2	128.0	134.4	135.2	137.1	141.1	141.1	137.6	95-100	69.93	993.9	58.52
105	138.9	136.5	141.3	142.9	147.1	150.3	150.8	147.5	100-105	75.01	1069	62.93
110	145.2	142.7	146.8	148.7	152.3	155.2	156.0	152.4	105-110	77.06	1146	67.47
115	148.0	144.6	148.5	151.7	154.9	156.4	157.3	153.6	110-115	76.50	1222	71.97
120	146.8	143.7	148.7	151.2	155.3	155.1	157.2	152.5	115-120	73.71	1296	76.31
125	141.4	141.8	146.8	149.4	151.1	151.9	154.5	149.8	120-125	69.28	1365	80.39
130	135.7	136.3	143.1	145.0	144.1	146.3	149.6	143.8	125-130	63.43	1429	84.13
135	130.1	130.6	138.3	138.8	137.2	139.3	143.7	137.3	130-135	56.55	1485	87.46
140	125.4	125.2	132.7	132.0	130.9	132.3	136.7	130.4	135-140	49.48	1535	90.37
145	122.5	120.2	127.0	125.9	125.6	126.2	130.1	124.2	140-145	42.60	1577	92.88
150	115.7	114.7	121.0	119.9	119.0	120.0	123.2	117.7	145-150	35.89	1613	94.99
155	106.3	106.2	111.8	111.6	110.5	111.9	113.5	109.0	150-155	29.07	1642	96.70
160	95.41	96.94	101.2	102.3	99.83	102.2	102.3	99.36	155-160	22.07	1664	98.00
165	84.95	87.62	90.62	92.27	89.99	92.04	92.29	89.45	160-165	15.68	1680	98.93
170	78.16	80.69	82.85	84.32	81.89	83.76	84.94	82.54	165-170	10.24	1690	99.53
175	81.69	83.98	85.66	86.58	84.04	85.18	86.91	85.57	170-175	5.883	1696	99.88
180	92.05	92.21	91.81	92.85	92.17	92.21	91.75	92.85	175-180	2.117	1698	100.00

DEG LUMINOUS INTENSITY:cd UNIT:lm



LUMINANCE cd/(m2)		
G(DEG)	C0/180	C90/270
85	10558	12068
80	5856	6668
75	4352	4873
70	3606	3975
65	3154	3408
60	2830	3000
55	2573	2684
50	2357	2431
45	2174	2225

C Range: 0 - 360DEG
C Interval: 30.0DEG
Test Speed: MEDIUM
Temperature:34DEG
Operators:Jason
Test Date:2015-09-01

γ Range: 0 - 180DEG
γ Interval: 0.5DEG
Test System:EVERFINE GO-2000A_V1 SYSTEM V1.0.256
Humidity:65.0%
Test Distance:18.630m [K=1.0000]
Remarks:

WEC AND CCEC

Test:U:220.9V I:0.0742A P:15.95W PF:0.9730 Lamp Flux:1698.4x1 lm		
NAME: LED jade light	TYPE:JD-18W-360N-FH-02(4000K)	
DIMENSION:	SPECIFICATION:18W	SERIAL No.:CZ150901
MANUFACTURER: Sheenly Lighting Co., Ltd	SURFACE:	PROTECTION ANGLE:

ρcc	80%			70%			50%			30%			10%			0
ρw	50%	30%	10%	50%	30%	10%	50%	30%	10%	50%	30%	10%	50%	30%	10%	0
ρfc	20%			20%			20%			20%			20%			0
RCR	RCR:Room Cavity Ratio						Wall Exitance Coefficients(WEC)									
0.0																
1.0	.370	.210	.067	.348	.199	.063	.307	.176	.056	.269	.155	.050	.234	.135	.044	
2.0	.319	.175	.054	.299	.165	.051	.261	.145	.045	.226	.127	.040	.194	.110	.035	
3.0	.283	.151	.045	.265	.142	.043	.230	.125	.038	.198	.109	.033	.169	.093	.029	
4.0	.255	.132	.039	.238	.125	.037	.206	.109	.033	.177	.095	.029	.149	.081	.025	
5.0	.232	.118	.034	.216	.111	.032	.187	.097	.029	.160	.084	.025	.135	.072	.022	
6.0	.212	.106	.030	.198	.100	.029	.171	.088	.026	.146	.076	.022	.122	.064	.019	
7.0	.196	.097	.027	.183	.091	.026	.158	.080	.023	.134	.069	.020	.112	.058	.017	
8.0	.182	.089	.025	.169	.083	.024	.146	.073	.021	.125	.063	.018	.104	.053	.016	
9.0	.169	.082	.023	.158	.077	.022	.136	.067	.019	.116	.058	.017	.097	.049	.014	
10.0	.158	.076	.021	.148	.071	.020	.128	.063	.018	.109	.054	.015	.091	.046	.013	

ρcc	80%			70%			50%			30%			10%			0
ρw	50%	30%	10%	50%	30%	10%	50%	30%	10%	50%	30%	10%	50%	30%	10%	0
ρfc	20%			20%			20%			20%			20%			0
RCR	RCR:Room Cavity Ratio						Ceiling Cavity Exitance Coefficients(CCEC)									
0.0	.565	.565	.565	.483	.483	.483	.329	.329	.329	.189	.189	.189	.061	.061	.061	
1.0	.562	.533	.507	.481	.457	.436	.329	.315	.302	.189	.182	.175	.061	.059	.057	
2.0	.556	.512	.475	.476	.440	.410	.326	.305	.286	.188	.177	.168	.060	.057	.055	
3.0	.549	.496	.454	.471	.428	.394	.323	.297	.276	.187	.174	.163	.060	.056	.053	
4.0	.542	.485	.441	.465	.419	.383	.320	.292	.270	.185	.171	.160	.060	.056	.052	
5.0	.535	.476	.432	.459	.411	.376	.316	.287	.265	.183	.169	.157	.059	.055	.052	
6.0	.528	.468	.425	.454	.406	.370	.313	.284	.262	.182	.167	.156	.059	.055	.051	
7.0	.521	.462	.421	.448	.401	.367	.310	.281	.260	.180	.165	.155	.058	.054	.051	
8.0	.515	.457	.417	.443	.396	.364	.307	.278	.258	.178	.164	.154	.058	.054	.051	
9.0	.509	.453	.414	.439	.393	.361	.304	.276	.257	.177	.163	.153	.057	.054	.051	
10.0	.504	.449	.412	.434	.390	.360	.301	.274	.255	.176	.162	.152	.057	.053	.051	

C Range: 0 - 360DEG
 C Interval: 30.0DEG
 Test Speed: MEDIUM
 Temperature:34DEG
 Operators:Jason
 Test Date:2015-09-01

γ Range: 0 - 180DEG
 γ Interval: 0.5DEG
 Test System:EVERFINE GO-2000A_V1 SYSTEM V1.0.256
 Humidity:65.0%
 Test Distance:18.630m [K=1.0000]
 Remarks:

Uncorrected UGR Table

Test:U:220.9V I:0.0742A P:15.95W PF:0.9730 Lamp Flux:1698.4x1 lm										
NAME: LED jade light					TYPE:JD-18W-360N-FH-02(4000K)					
DIMENSION:					SPECIFICATION:18W			SERIAL No.:CZ150901		
MANUFACTURER: Sheenly Lighting Co., Ltd					SURFACE:			PROTECTION ANGLE:		
ceiling/cavity	0.7	0.7	0.5	0.5	0.3	0.7	0.7	0.5	0.5	0.3
walls	0.5	0.3	0.5	0.3	0.3	0.5	0.3	0.5	0.3	0.3
working plane	0.2	0.2	0.2	0.2	0.2	0.2	0.2	0.2	0.2	0.2
Room dimensions	Viewed crosswise					Viewed endwise				
x = 2H y = 2H	13.0	14.1	13.9	14.9	16.1	13.2	14.3	14.1	15.2	16.3
3H	15.6	16.6	16.5	17.5	18.6	16.0	17.0	16.9	17.9	19.0
4H	17.0	17.9	17.9	18.8	20.0	17.5	18.4	18.4	19.3	20.5
6H	18.5	19.4	19.4	20.3	21.5	19.1	20.0	20.0	20.9	22.1
8H	19.3	20.1	20.2	21.1	22.3	20.0	20.8	20.9	21.7	22.9
12H	20.3	21.1	21.2	22.0	23.2	21.0	21.8	21.9	22.7	23.9
4H 2H	13.9	14.8	14.8	15.7	16.9	14.0	14.9	14.9	15.8	17.0
3H	16.6	17.4	17.6	18.4	19.6	16.9	17.7	17.9	18.7	19.9
4H	18.2	18.9	19.1	19.8	21.1	18.6	19.3	19.5	20.2	21.5
6H	19.8	20.4	20.8	21.4	22.7	20.3	21.0	21.3	21.9	23.2
8H	20.7	21.3	21.7	22.3	23.6	21.3	21.9	22.3	22.9	24.2
12H	21.8	22.3	22.7	23.3	24.6	22.4	23.0	23.4	24.0	25.2
8H 4H	18.7	19.3	19.7	20.3	21.6	19.1	19.7	20.0	20.6	21.9
6H	20.7	21.1	21.6	22.1	23.5	21.1	21.6	22.1	22.6	23.9
8H	21.7	22.2	22.7	23.2	24.5	22.3	22.7	23.3	23.7	25.0
12H	23.0	23.4	24.0	24.4	25.7	23.6	24.0	24.6	25.0	26.3
12H 4H	18.9	19.4	19.9	20.4	21.7	19.2	19.7	20.1	20.7	22.0
6H	20.9	21.3	21.9	22.4	23.7	21.3	21.7	22.3	22.8	24.1
8H	22.1	22.5	23.1	23.5	24.8	22.6	22.9	23.6	24.0	25.3
Variations with the observer position at spacings:										
S = 1.0H	+ 0.1 / - 0.1					+ 0.1 / - 0.1				
1.5H	+ 0.2 / - 0.3					+ 0.2 / - 0.3				
2.0H	+ 0.3 / - 0.4					+ 0.3 / - 0.4				

CIE Pub.117 Corrected 1698 lm Total Lamp Luminous Flux.(8log(F/F0) = 1.8)

C Range: 0 - 360DEG
 C Interval: 30.0DEG
 Test Speed: MEDIUM
 Temperature:34DEG
 Operators:Jason
 Test Date:2015-09-01

γ Range: 0 - 180DEG
 γ Interval: 0.5DEG
 Test System:EVERFINE GO-2000A_V1 SYSTEM V1.0.256
 Humidity:65.0%
 Test Distance:18.630m [K=1.0000]
 Remarks:

UTILIZATION FACTORS TABLE

Test:U:220.9V I:0.0742A P:15.95W PF:0.9730 Lamp Flux:1698.4x1 lm		
NAME: LED jade light	TYPE:JD-18W-360N-FH-02(4000K)	
DIMENSION:	SPECIFICATION:18W	SERIAL No.:CZ150901
MANUFACTURER: Sheenly Lighting Co., Ltd	SURFACE:	PROTECTION ANGLE:

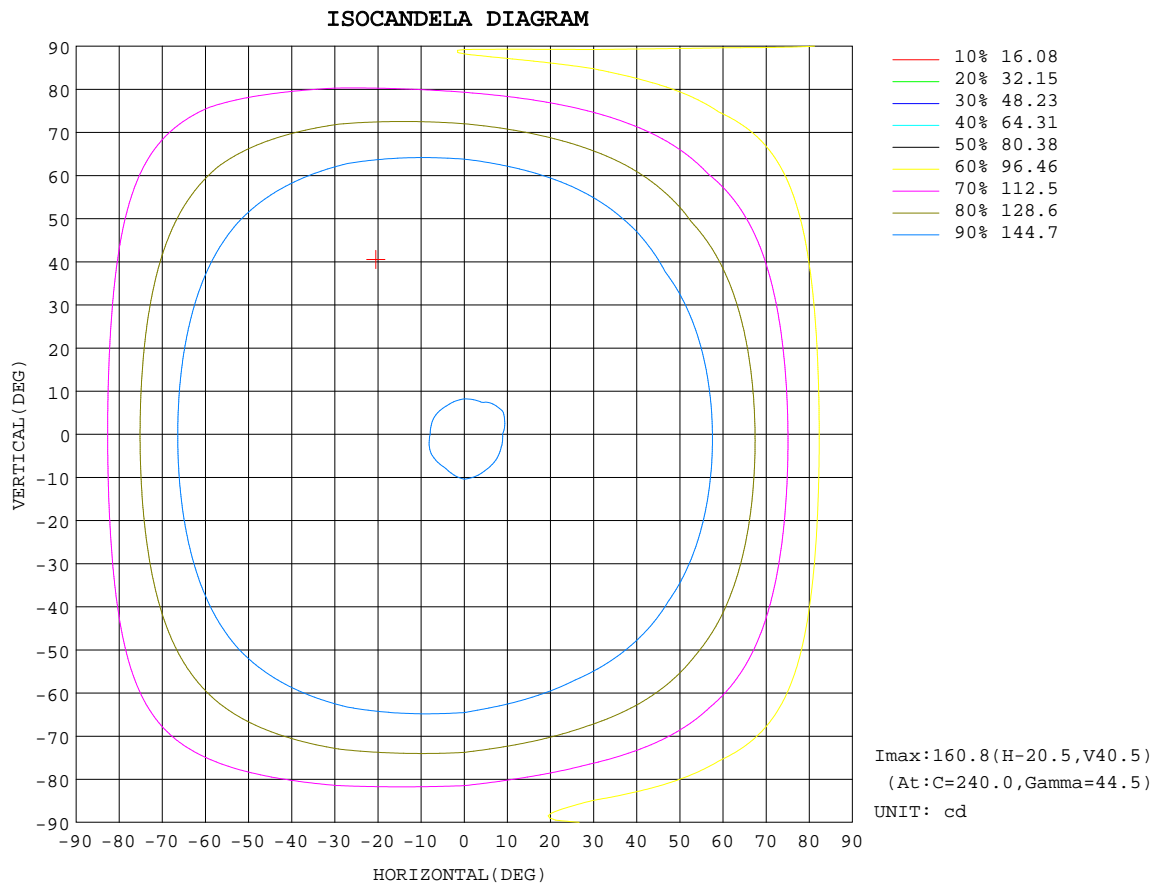
REFLECTANCE										
Ceiling	0.8	0.8	0.8	0.7	0.7	0.7	0.5	0.5	0.5	0
Walls	0.7	0.5	0.3	0.7	0.5	0.3	0.7	0.5	0.3	0
Working plane	0.2	0.2	0.2	0.2	0.2	0.2	0.2	0.2	0.2	0
ROOM INDEX	UTILIZATION FACTORS(PERCENT) $k(RI) \times RCR = 5$									
k = 0.60	38	26	19	36	24	18	32	22	17	9
0.80	47	33	25	44	32	24	39	29	22	13
1.00	54	41	32	51	38	31	44	36	28	16
1.25	61	48	39	57	45	37	49	40	33	20
1.50	66	53	44	62	50	42	53	44	37	22
2.00	74	62	53	69	58	50	59	51	44	26
2.50	79	68	59	73	63	56	62	55	49	29
3.00	83	73	65	77	68	61	65	59	53	31
4.00	88	79	72	81	74	68	69	63	58	35
5.00	91	84	77	84	78	72	71	66	62	37
ROOM INDEX	UF(total)									Direct
According to DIN EN 13032-2 2004			Suspended				SHRNOM = 1.25			

C Range: 0 - 360DEG
 C Interval: 30.0DEG
 Test Speed: MEDIUM
 Temperature:34DEG
 Operators:Jason
 Test Date:2015-09-01

γ Range: 0 - 180DEG
 γ Interval: 0.5DEG
 Test System:EVERFINE GO-2000A_V1 SYSTEM V1.0.256
 Humidity:65.0%
 Test Distance:18.630m [K=1.0000]
 Remarks:

ISOCANDELA DIAGRAM

Test:U:220.9V I:0.0742A P:15.95W PF:0.9730 Lamp Flux:1698.4x1 lm		
NAME: LED jade light	TYPE:JD-18W-360N-FH-02(4000lm300K)	
DIMENSION:	SPECIFICATION:18W	SERIAL No.:CZ150901
MANUFACTURER: Sheenly Lighting Co., Ltd	SURFACE:	PROTECTION ANGLE:



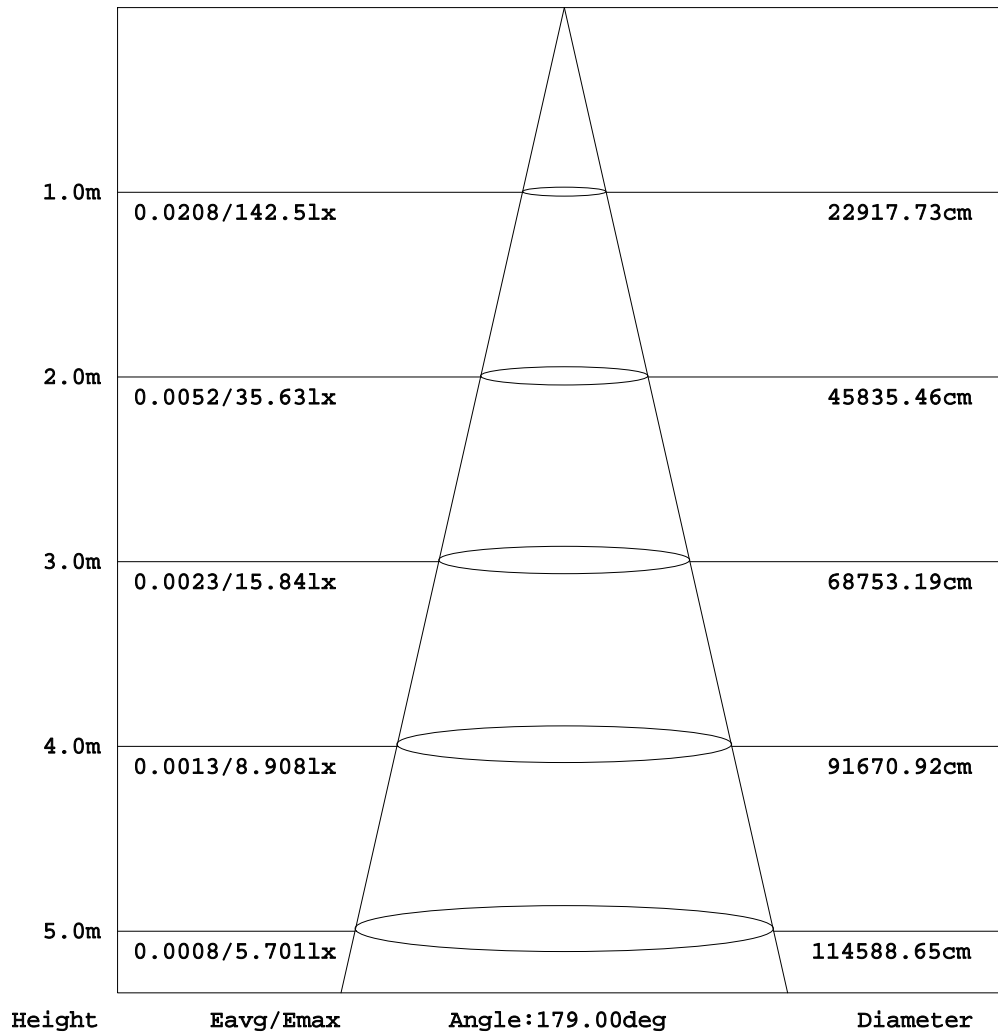
C Range: 0 - 360DEG
 C Interval: 30.0DEG
 Test Speed: MEDIUM
 Temperature:34DEG
 Operators:Jason
 Test Date:2015-09-01

γ Range: 0 - 180DEG
 γ Interval: 0.5DEG
 Test System:EVERFINE GO-2000A_V1 SYSTEM V1.0.256
 Humidity:65.0%
 Test Distance:18.630m [K=1.0000]
 Remarks:

AAI Figure

Test:U:220.9V I:0.0742A P:15.95W PF:0.9730 Lamp Flux:1698.4x1 lm		
NAME: LED jade light	TYPE:JD-18W-360N-FH-02(4000K)	4000K
DIMENSION:	SPECIFICATION:18W	SERIAL No.:CZ150901
MANUFACTURER: Sheenly Lighting Co., Ltd	SURFACE:	PROTECTION ANGLE:

Flux out:858.7 lm



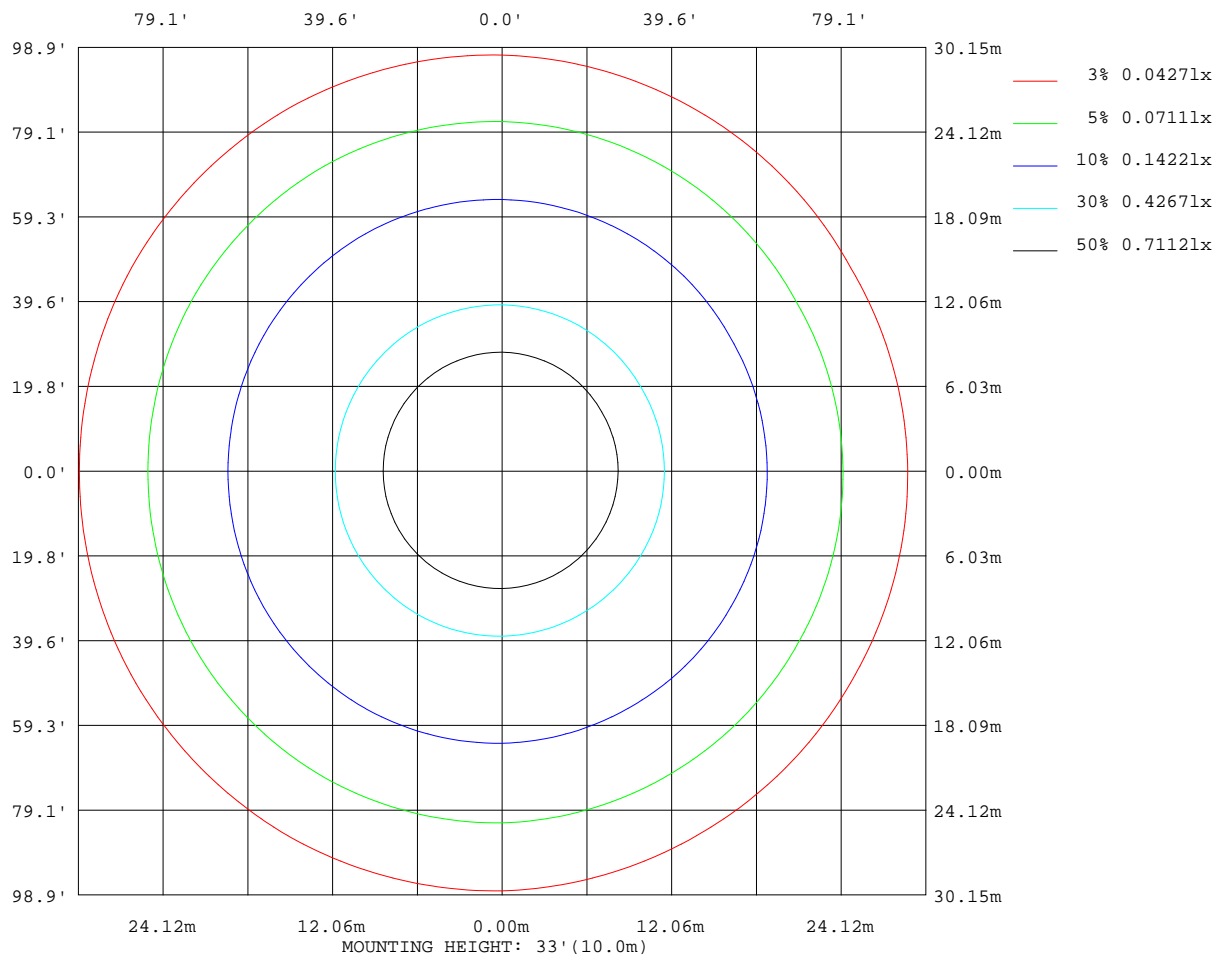
Note:The Curves indicate the illuminated area and the average illumination when the luminaire is at different distance.

C Range: 0 - 360DEG
 C Interval: 30.0DEG
 Test Speed: MEDIUM
 Temperature:34DEG
 Operators:Jason
 Test Date:2015-09-01

γ Range: 0 - 180DEG
 γ Interval: 0.5DEG
 Test System:EVERFINE GO-2000A_V1 SYSTEM V1.0.256
 Humidity:65.0%
 Test Distance:18.630m [K=1.0000]
 Remarks:

ISOLUX DIAGRAM

Test:U:220.9V I:0.0742A P:15.95W PF:0.9730 Lamp Flux:1698.4x1 lm		
NAME: LED jade light	TYPE:JD-18W-360N-FH-02(4000K)	4000K(B00K)
DIMENSION:	SPECIFICATION:18W	SERIAL No.:CZ150901
MANUFACTURER: Sheenly Lighting Co., Ltd	SURFACE:	PROTECTION ANGLE:



C Range: 0 - 360DEG
 C Interval: 30.0DEG
 Test Speed: MEDIUM
 Temperature:34DEG
 Operators:Jason
 Test Date:2015-09-01

γ Range: 0 - 180DEG
 γ Interval: 0.5DEG
 Test System:EVERFINE GO-2000A_V1 SYSTEM V1.0.256
 Humidity:65.0%
 Test Distance:18.630m [K=1.0000]
 Remarks:

Average Luminance Table(CIBSE)

Test:U:220.9V I:0.0742A P:15.95W PF:0.9730 Lamp Flux:1698.4x1 lm		
NAME: LED jade light	TYPE:JD-18W-360N-FH-02(4000K)	4000K
DIMENSION:	SPECIFICATION:18W	SERIAL No.:CZ150901
MANUFACTURER: Sheenly Lighting Co., Ltd	SURFACE:	PROTECTION ANGLE:

Parameter description for average Luminance	Symbol	Value	Unit
Luminance in Azimuth Plane	Bc	refer Table 2	cd/sq.m.
Intensity at angle Gamma in given azimuth plane	I	from data	cd/klm
Number of lamps	N	1	
Output of each lamp(initial lumens as specified)	F	1698.4	lm
Multiplying factor	K	1	
Luminous area in horizontal plane used in calculations	A	0.1	sq.m.
Angle to the downward vertical from light centre	Gamma	from data	deg

Table 1. Calculation parameters for determination of CIBSE LG3:1996 Average Luminance

G deg	C plane(deg)																		
	0	10	20	30	40	50	60	70	80	90	100	110	120	130	140	150	160	170	180
55	2573	2570	2571	2577	2587	2602	2619	2640	2662	2684	2701	2715	2726	2734	2739	2741	2741	2739	2737
60	2830	2830	2836	2846	2863	2884	2908	2939	2970	3000	3020	3037	3049	3058	3063	3066	3063	3059	3056
65	3154	3157	3167	3185	3210	3241	3278	3322	3367	3408	3436	3457	3471	3481	3485	3485	3482	3477	3472
70	3606	3612	3628	3654	3692	3738	3791	3855	3918	3975	4013	4040	4059	4068	4072	4071	4067	4062	4056
75	4352	4360	4381	4416	4468	4532	4606	4698	4790	4873	4925	4962	4986	4996	4998	4994	4990	4986	4982
80	5856	5853	5877	5929	6017	6127	6252	6399	6542	6668	6740	6786	6812	6821	6820	6815	6818	6823	6827
85	10558	10519	10537	10612	10753	10944	11178	11486	11794	12068	12209	12292	12327	12323	12298	12268	12274	12287	12301

Table 2. Average Luminance(cd/sq.m.) for defined C plane,Gamma angle

CIBSE Category	Gamma (deg)	Average Luminance		Patch Luminance	
		maximum	specified	maximum	specified
		calculated	maximum	measured	maximum
Category 1	55 to 90	12327	500		1500
Category 2	65 to 90	12327	500		1500
Category 3	75 to 90	12327	500		1500

Table 3. Tabulation of Average and Patch Luminance(cd/sq.m.) for defined CIBSE categories

C Range: 0 - 360DEG
 C Interval: 30.0DEG
 Test Speed: MEDIUM
 Temperature:34DEG
 Operators:Jason
 Test Date:2015-09-01

γ Range: 0 - 180DEG
 γ Interval: 0.5DEG
 Test System:EVERFINE GO-2000A_V1 SYSTEM V1.0.256
 Humidity:65.0%
 Test Distance:18.630m [K=1.0000]
 Remarks:

LUMINOUS DISTRIBUTION INTENSITY DATA

Test:U:220.9V I:0.0742A P:15.95W PF:0.9730 Lamp Flux:1698.4x1 lm		
NAME: LED jade light	TYPE:JD-18W-360N-FH-02(4000K)	
DIMENSION:	SPECIFICATION:18W	SERIAL No.:CZ150901
MANUFACTURER: Sheenly Lighting Co., Ltd	SURFACE:	PROTECTION ANGLE:

Table--1

UNIT: cd

C(DEG) γ (DEG)	0	30	60	90	120	150	180	210	240	270	300	330							
0	142	142	142	142	142	142	142	142	142	142	142	142							
5	143	143	143	142	143	143	143	143	143	143	143	143							
10	145	145	145	145	145	146	145	145	146	146	145	145							
15	147	147	147	147	148	148	148	148	149	148	148	147							
20	150	149	149	150	151	151	151	151	151	151	150	149							
25	152	151	152	152	153	154	154	154	154	154	153	152							
30	153	153	153	154	156	156	156	156	157	157	155	154							
35	154	154	155	156	157	158	158	159	159	159	157	155							
40	155	154	155	157	159	160	160	160	160	160	158	155							
45	153	153	155	157	159	160	160	160	161	160	157	154							
50	151	151	153	156	159	160	159	159	160	158	155	152							
55	147	148	150	154	157	157	157	157	157	155	152	147							
60	141	142	145	150	153	154	153	153	153	150	146	141							
65	133	134	138	144	147	148	146	147	146	143	138	132							
70	123	125	130	136	139	139	138	139	137	133	127	122							
75	112	114	119	126	129	129	129	129	127	122	116	111							
80	102	103	109	116	118	119	118	119	116	111	106	101							
85	91.9	92.4	97.4	105	108	107	107	107	105	101	97.1	92.5							
90	95.8	94.7	95.7	102	104	101	100	99.7	99.2	98.7	100	97.7							
95	115	114	116	123	123	119	118	120	124	124	124	121							
100	129	127	129	134	136	134	137	140	142	141	140	135							
105	139	136	137	141	143	142	147	149	151	151	150	146							
110	145	143	143	147	149	148	152	154	156	156	154	150							
115	148	146	144	148	151	152	155	156	157	157	155	152							
120	147	143	144	149	150	152	155	155	155	157	155	150							
125	141	141	143	147	149	150	151	151	153	155	152	147							
130	136	134	139	143	145	145	144	145	148	150	147	141							
135	130	128	133	138	140	138	137	137	141	144	141	134							
140	125	124	126	133	133	131	131	131	134	137	133	128							
145	122	120	120	127	126	125	126	126	126	130	126	122							
150	116	114	115	121	121	119	119	120	120	123	120	116							
155	106	105	107	112	112	111	110	111	112	113	111	107							
160	95.4	95.6	98.3	101	103	102	99.8	101	103	102	101	97.9							
165	84.9	86.4	88.8	90.6	92.2	92.4	90.0	91.0	93.1	92.3	90.4	88.5							
170	78.2	80.0	81.4	82.8	84.2	84.4	81.9	82.5	85.0	84.9	83.5	81.6							
175	81.7	83.3	84.7	85.7	87.0	86.1	84.0	84.5	85.8	86.9	86.6	84.6							
180	92.1	92.8	91.6	91.8	92.5	93.2	92.2	92.7	91.7	91.7	92.6	93.1							

C Range: 0 - 360DEG
 C Interval: 30.0DEG
 Test Speed: MEDIUM
 Temperature:34DEG
 Operators:Jason
 Test Date:2015-09-01

γ Range: 0 - 180DEG
 γ Interval: 0.5DEG
 Test System:EVERFINE GO-2000A_V1 SYSTEM V1.0.256
 Humidity:65.0%
 Test Distance:18.630m [K=1.0000]
 Remarks: