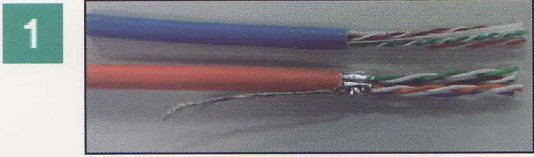




Keystone Modules CAT 5e, CAT 6 & CAT 6_A

Assembly Instruction for

DN-93502, DN-93603, DN-93604, DN-93606 & DN-93615 DN-93612-1



Strip approximately 40 mm of the cable jacket, cut off the plastic cross (found at UTP cables), and separate the wire into 4 pairs.

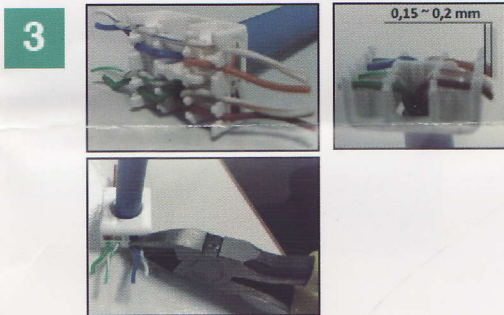
2 Wiring Configurations

T568 A

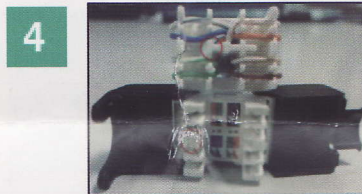
- Pin 5 White/Blue
- Pin 4 Blue
- Pin 1 White/Green
- Pin 2 Green
- Pin 3 White/Orange
- Pin 6 Orange
- Pin 7 White/Brown
- Pin 8 Brown

T568 B

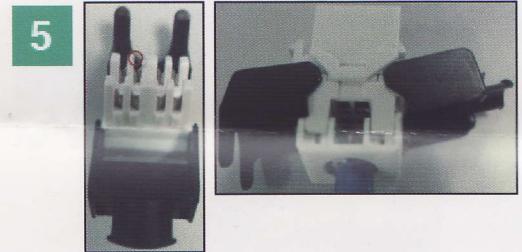
- Pin 5 White/Blue
- Pin 4 Blue
- Pin 1 White/Orange
- Pin 2 Orange
- Pin 3 White/Green
- Pin 6 Green
- Pin 7 White/Brown
- Pin 8 Brown



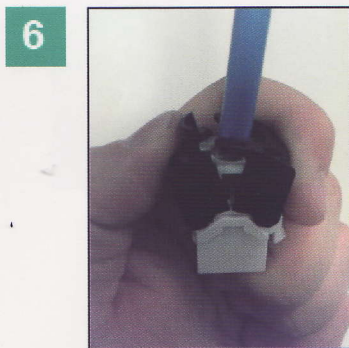
Insert the wires through the cap and lay them into the correct slots, according to the wiring diagram on the cap. Trim the wires flush with the cap. It is strongly recommended that the tip of the wire protrudes only 0.15 - 0.20 mm.



Match the T-shaped rib in the cap with the appropriate cavity on the IDC, and press the cap onto the IDC.



Press the cap down onto the IDC and make sure the wires are deeper than the tiny teeth inside of the IDC slots.

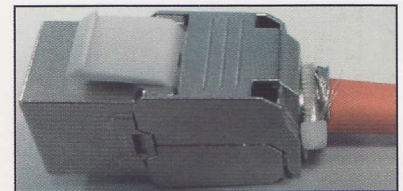


Close the outer cap by pushing down both sides of the outer cap until it clicks.



Unshielded

Tie up the cable with the cable tie and finish.



Shielded

Connect the drain wire to the shielded shell housing and tie up the cable with the cable tie and finish.