



AVH2117AX-U2



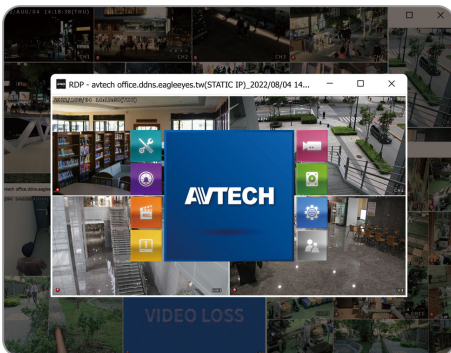
16CH PoE Solution
EaZy Networking
Push Video / Push Status
Easy-to-use Interface

16CH H.265 NVR w/ 16CH PoE

Features

Unlimited Channel Remote Live View

The ETU line of recorders allows you to see as many ETU devices simultaneously as needed without a CMS license. Its dedicated AVTECH desktop application lets you view all your ETU recorders from a single PC and screen becoming a suitable solution for all sizes of businesses and projects.



Easy to Use Interface

The ETU line of recorders implements a fully redesigned interface for ease of use providing a plug & play experience for all AVTECH users. The ETU series allows you to avoid time-consuming setup and focus on what is truly important.



100% Made in Taiwan

AVTECH is well-known for its MIT product quality and innovation ability in the CCTV industry. We design and manufacture all of our products in Taiwan and all products are NDAA- and TAA-compliant.



Free & Quick P2P Cloud Service

Simply scan to complete internet setup via our cloud service, EaZy Networking, to save you all the troubles of complicated network configurations.

Active Event Notification with APP

The app, AVTECH DVR, supports the ETU recorder line to send Push Video messages for alarm or motion events and Push Status messages for system events, such as video loss or HDD data removal.

Remote Surveillance

Remote surveillance is available via the app, AVTECH DVR, and the AVTECH desktop program compatible with Windows OS only

Specifications*

Hardware		
Video Input		LAN port with PoE x 16
Video Output	HDMI	YES (4K2K)
	VGA**	YES (720P / Spot Monitor Supported)
	Composite	YES (Spot Monitor Supported)
Video Output Resolution		Up to 4K2K (3840 x 2160)
Audio		1 in (mic in) / 1 out
Alarm I/O		4 in / 1 out
RS485		YES
HDD Storage***		Either two 16TB SATA HDD installed in the recorder, or one 16TB SATA HDD installed and a disk array connected to the recorder via the eSATA interface
USB Port		USB 2.0 x 2
eSATA Port		Expandable with a SATA to eSATA cable
Ethernet	LAN port	10/100 Mbps with PoE (IEEE802.3af)
	WAN port	1000 Mbps x 1
Fan		YES
Software		
Video Compression Format		H.265
Audio Compression Format		G711
Live Display Mode	Local	16CH
	Remote	4CH
Playback Display Mode	Local	16CH
	Remote	4CH
Local Single Channel Playback		YES
Recording Mode		Manual / Event / Alarm / Schedule
Record Streaming		Dual
Recording Resolution		480 IPS @ 4K2K (3840 x 2160)
Recording Throughput		160Mbps
Pre-alarm Recording		YES
Quick Search		Time / Event
Event Notification		Push Video / Push Status / E-Mail
Security		Multiple user access levels with password
EaZy Networking		YES
Spot Monitor Setup		Call Monitor / Event Monitor / Live Monitor (VGA or Composite)
Free DDNS Service		YES
Network		
Protocols		DDNS, PPPoE, DHCP, NTP, SNTP, TCP/IP, ICMP, SMTP, FTP, HTTP, RTP, RTSP, RTCP, IPv4, UPnP, DNS, UDP, IGMP
ONVIF Compatible		YES

Specifications*

Remote Surveillance from PC		
Remote Access	Web browser	Windows Edge, Google Chrome, Mozilla Firefox & Opera on Windows 10 (and later versions) and Google Chrome & Mozilla Firefox on MAC
	PC program	Remote Desktop program for Windows OS
	PC program	32CH CMS software for Windows OS
Max. Online User		40
Mobile Surveillance		
APP	AVTECH DVR	
Compatible Devices	iOS & Android devices	
Push Video	YES (16CH)	
Push Status	YES	
General		
Power Source (±10%)	DC54V / 3.2A	
PoE Power Output	IEEE802.3af, 130W total	
Operating Temperature	10°C ~ 40°C (50°F~104°F)	
Operating Humidity	10% ~ 85%	
Dimensions (mm)*****	319.5 x 254.9 x 52	
Net Weight (kg)	2	
Minimum PC Browsing Requirements	<ul style="list-style-type: none"> • Intel core i3 or higher, or equivalent AMD • 2GB RAM • AGP graphics card, Direct Draw, 32MB RAM • Windows 10 and later versions • Windows Edge, Google Chrome, Mozilla Firefox & Opera on Windows 10 (and later versions) 	
Optional Peripherals	SATA to eSATA cable (PWSC07F320200)	
Certification	CE / UL (Power Adapter)	

*The specifications are subject to change without notice. ** unavailable when the HDMI video display is set to 4K2K. *** HDDs are optional.
 **** Available only when the connected cameras are supported. ***** Dimensional tolerance: ±5mm

Rear Panel

