



# AVH2116

8CH PoE Solution  
EaZy Networking  
Push Video / Push Status  
Alarm Scenario Setup

## 16CH H.265 NVR w/ 8CH POE

### Features

#### H.265 Compression Technology

With this compression technology, the recording capacity is greatly enhanced as well as bandwidth saving for better efficiency and performance than the systems employing other compression formats

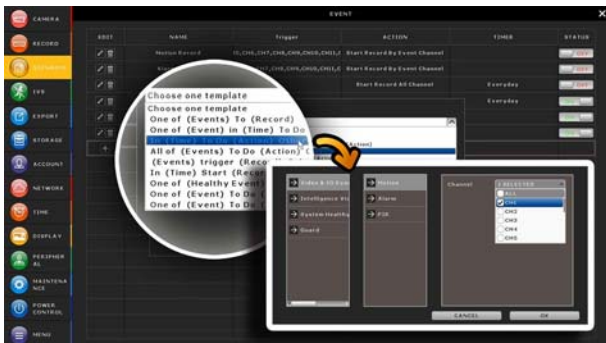


#### Cloud Service - EaZy Networking\*

- EaZy Networking, the cloud service provided by AVTECH, available to connect this device to Internet automatically in three steps with our free mobile app, EagleEyes.
- The "Buddy" feature to share the device access permission to other people.
- Device login / out notifications reported.

#### Alarm Scenario Customization

"Scenario" is a new feature allowing you to customize a series of actions which will be run automatically after the specified event occurs. There are several scenario templates for you to choose when and what to do after a specific event occurs.



#### Push Video & Push Status - Active Event Notification with EagleEyes App

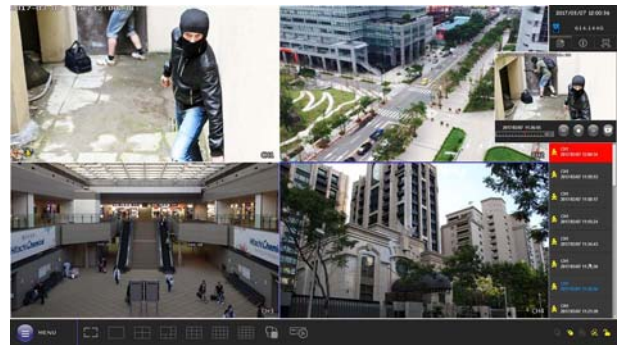
- Push Video to send instant notifications for an alarm event when an alarm device is connected to the recorder.
- Push Status to send instant notifications for system events, such as video loss or HDD data removal.

#### One Ethernet Cable Solution (POE, Power-over-Ethernet)

Camera power supply & video transmission over one Ethernet cable to eliminate the needs of power adapters for your cameras during the whole HD surveillance system setup.

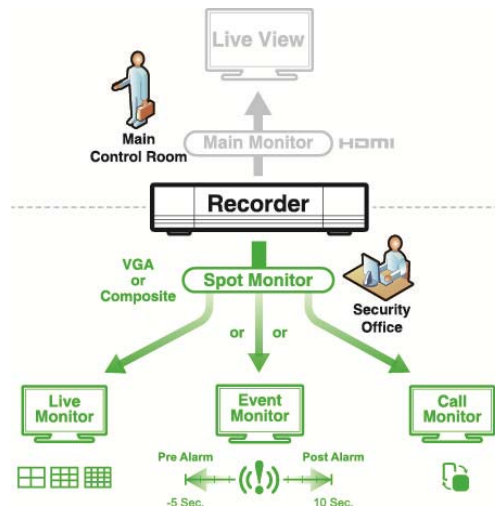
#### Event Pop-up / Preview

All events are listed on the right panel with corresponding event icons for you to quickly recognize the event type. The most current one will flash to catch your attention. Click one event and you're able to preview the footage with pre-alarm images.



#### Spot Monitor

In addition to the main display via the main HDMI output, you can assign a secondary display to show live view, call monitor or event monitor.



## Specifications\*

Hardware		
Video Input		8 LAN ports with PoE + 1 LAN port
Video Output	HDMI	YES (4K2K)
	VGA	YES (Spot Monitor Supported)
	Composite	YES (Spot Monitor Supported)
Video Output Resolution		16CH Mode: 1080P 9CH Mode: 4K2K
Audio		1 in (mic in) / 1 out
Alarm I/O		4 in / 1 out
RS485		YES
HDD Storage**		Either two 10TB SATA HDD installed in the recorder, or one 10TB SATA HDD installed and a disk array connected to the recorder via the eSATA interface
USB Port		YES
eSATA Port		Expandable with a SATA to eSATA cable
IR Remote Control		YES
Ethernet	POE 1 ~ 8 (LAN) ports	10/100 Mbps with PoE x 8 10/100 Mbps x 1
	Internet (WAN) port	1000 Mbps
Software		
Video Compression Format		H.265
Audio Compression Format		G711
Local / Remote Display Mode		16CH
Local / Remote Playback Mode		16CH
Local Single Channel Playback		YES
Recording Mode		Manual / Event / Alarm / Schedule
Record Streaming		Dual
Recording Resolution		480 IPS @ 3264 x 2448
Recording Throughput		80Mbps
Pre-alarm Recording		YES
Quick Search		Time / Event
Event Notification		Push Video / Push Status / Video Mail / Message Mail
Security		Multiple user access levels with password
Remote Access		(1) Web browser: Windows Edge, Internet Explorer, Google Chrome & Safari (2) PC program: CMS Lite, 32CH CMS software for Windows OS (3) Mobile app: EagleEyes on iOS & Android mobile devices
Max. Online User		20
Multicast		YES
Seamless Recording***		YES
EaZy Networking		YES
IVS***		YES
Spot Monitor Setup		Call Monitor / Event Monitor / Live Monitor (VGA & Composite)

## Specifications\*

General	
Alarm Scenario Setup	YES
Alarm Pop-up & Preview	YES
Free DDNS Service	YES
Power Source (±10%)	DC48V / 2.5A
PoE	IEEE802.3af
Operating Temperature	10°C ~ 40°C (50°F~104°F)
Operating Humidity	10% ~ 85%
Minimum PC Browsing Requirements	<ul style="list-style-type: none"> <li>• Intel core i3 or higher, or equivalent AMD</li> <li>• 2GB RAM</li> <li>• AGP graphics card, Direct Draw, 32MB RAM</li> <li>• Windows 10, Windows 8, Windows 7 &amp; Windows Vista, DirectX 9.0 or later</li> <li>• Windows Edge, Internet Explorer 7.x or later</li> </ul>
Optional Peripherals	HDMI Matrix (HDM02) / USB Joystick (AVX102) / SATA to eSATA cable (PWSC07F120200)

\*The specifications are subject to change without notice \*\* HDDs are optional.

\*\*\* Available only when the connected cameras are supported \*\*\*\* Dimensional tolerance: ±5mm

## Rear Panel

